

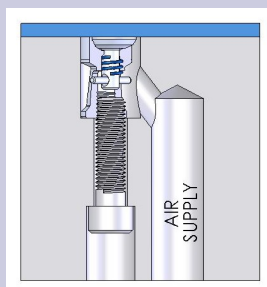
DWD Air Poppets offer versatility, durability, and reliability

A full line of air poppets and accessories is offered by David Wolfe Design, Inc. Utilizing air-assistance to eject plastic parts out of the mold, they offer higher airflow because of multiple air access holes. The air poppets are made from hardened 17-4 PH stainless steel to resist rust and corrosion, and range in size from .250"D to 1.417"D and Metric sizes ranging from 8.0mm to 18.0mm.

Various mounting styles are available including press-fit, bolt-in, or threaded directly into the mold surface. Securing with a bolt is advantageous when the hole might be slightly oversize, in aluminum molds, or where the mold steel is warm and there's a risk of blowing out the poppet due to thermal contraction. When using a retention screw, it is recommended to use a David Wolfe Design Drill Jig. This allows the mold-maker to drill an angled air access hole manually without a complicated machine setup.

A Collar may be purchased separately, which allows the mold-maker to secure the poppet from the face of the mold. These also allow the molder to remove the poppets while the mold is in the press when frequent contamination might be a problem.

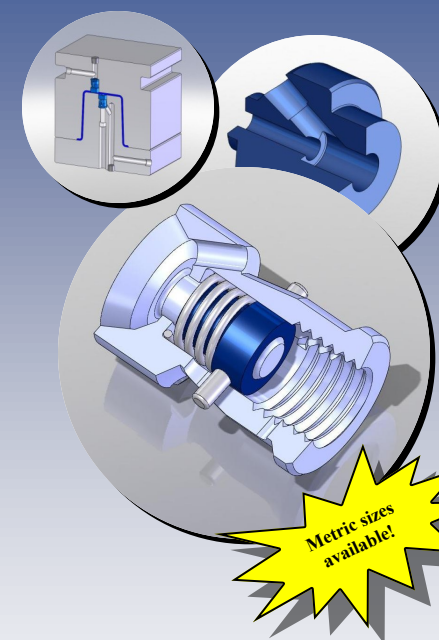
For large compression molds and abusive environments, David Wolfe Design offers a heavy-duty "Summo" style poppet. These are 36.0mm (1.417") in diameter, provide an o-ring seal, and are threaded directly into the mold steel.



David Wolfe Design, Inc.
829 Moe Drive
Akron, Ohio 44310 USA



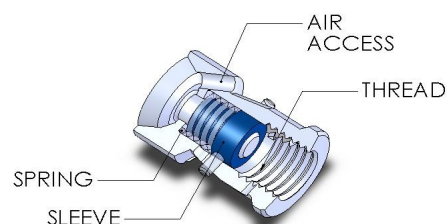
Air Poppets and Accessories



**For Plastic, Rubber, and
Composite Molds**

U.S. Patent No. 6,443,421

Tel: 330-633-6124
www.airpoppet.com



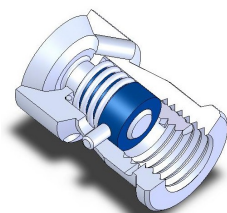
U.S. PATENT 6,443,421 B1

Advantages of the "Original" Series:

- Corrosion resistant stainless steel
- Bolt-in or Press-fit styles available
- Superior air flow
- Stainless steel screws available
- Complete family of components
- Affordability

PLUS! These new "SL" features:

- Guide sleeve for axial alignment
- Sleeve reduces wear on cross pin
- Positive stop to reduce spring fatigue
- High pressure spring for tighter seal
- Spring rated for high temperatures
- Life tested at 1,000,000 cycles
- Vacuum applications

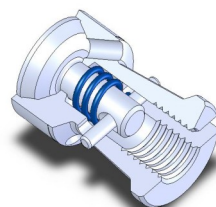


"SL" Series Poppets

DSL-0	(1/4")	\$94.00
DSL-1	(3/8")	\$74.00
DSL-2	(1/2")	\$83.00
DSL-13	(3/4")	\$106.00
DSL-14	(1.00")	\$121.00

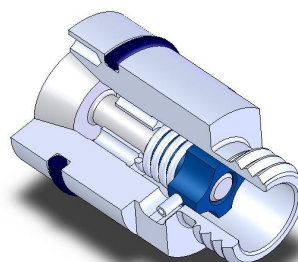
(metrics)

DSM-08	(8mm)	\$74.00
DSM-12	(12mm)	\$83.00
DSM-18	(18mm)	\$98.00



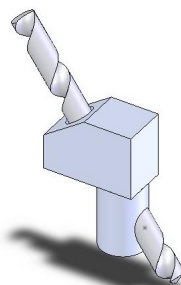
"Original" Series Poppets

DWD-0	(1/4")	\$82.00
DWD-1	(3/8")	\$64.00
DWD-2	(1/2")	\$72.00
DWD-13	(3/4")	\$92.00
DWD-14	(1.00")	\$105.00



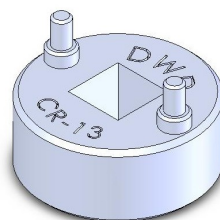
"Summo" Series Poppets

SM-36	\$300.00
SM-36-2 (36.0mm)	\$375.00



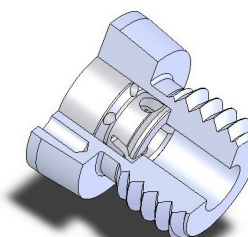
Drill Jigs

DJ-0	(1/4")	\$45.00
DJ-1	(3/8")	\$45.00
DJ-2	(1/2")	\$45.00



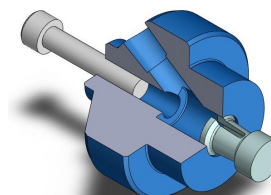
Spanner Wrenches

CR-2	(1/2")	\$25.00
CR13	(3/4")	\$25.00
CR-SUMMO		\$25.00
CR-SUMMO2		\$75.00



Poppet Collars

2-COL	(1/2")	\$98.00
13-COL	(3/4")	\$124.00



Rotational Mold Inserts

(Poppet & screw sold separately)

RP-1	(fits DSL-1)	\$35.00
RP-2	(fits DSL-2)	\$35.00

Contact David Wolfe Design via phone, fax, email, or our website for complete technical information such as dimensions, application, installation, and mounting bolt availability.

Reach us on your smart phone



Connect with us on



David Wolfe Design, Inc.
829 Moe Drive
Akron, Ohio 44310 USA

Phone: 330-633-6124
Fax: 330-633-9926
Email: info@airpoppet.com
www.airpoppet.com